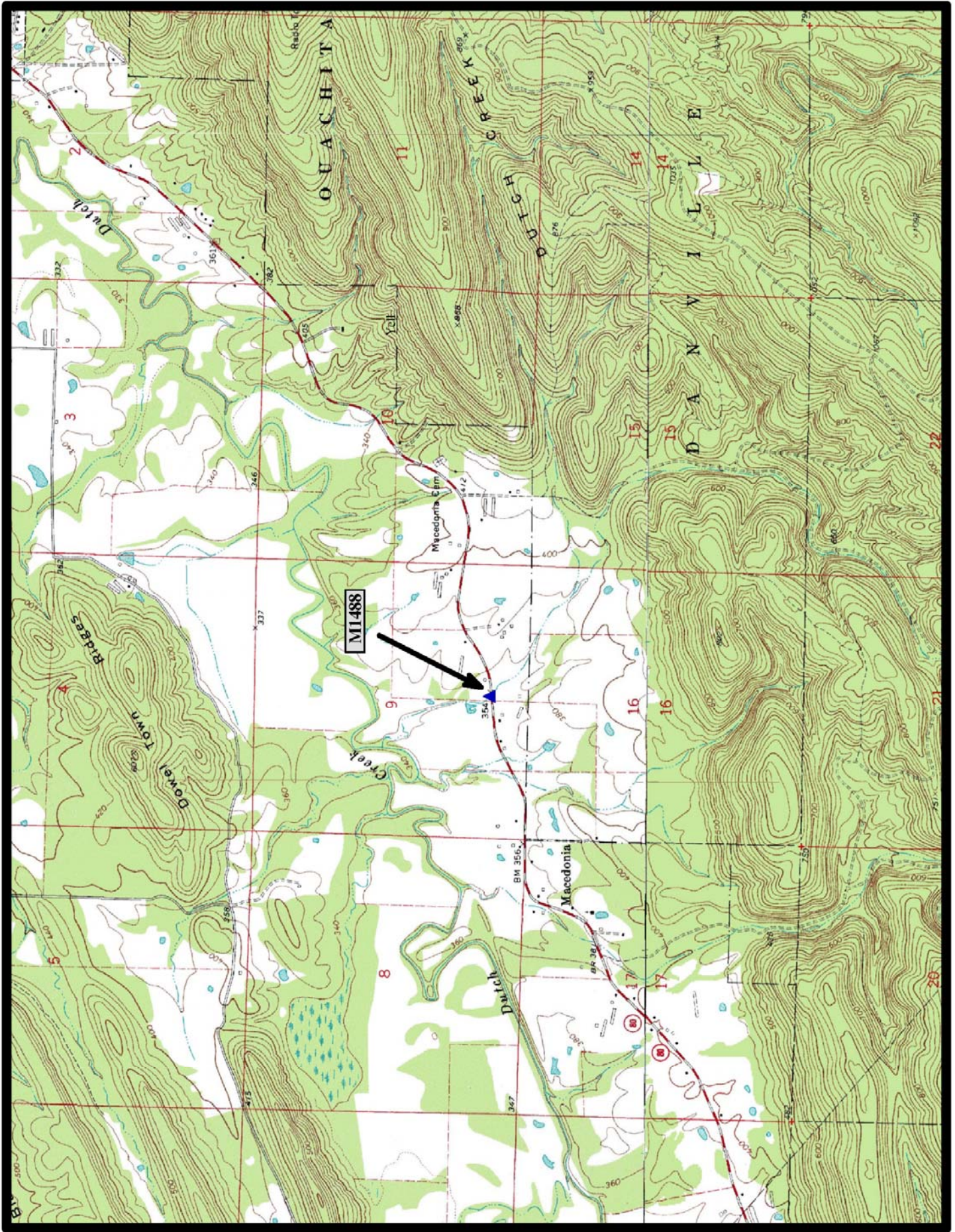




HISTORIC BRIDGE #M1488
STATE HIGHWAY 80
YELL COUNTY
CONCRETE SLAB
CROSSES - LONG CREEK
DATE OF CONSTRUCTION - 1942
BUILDER - WORKS PROGRESS ADMINISTRATION (WPA)
HISTORIC BRIDGE INVENTORY DATE - 2010
SHPO NUMBER -
HAER NUMBER -
DATE LISTED ON NATIONAL REGISTER -
LAT./LONG. 35:00:29.86, -93:27:10.20

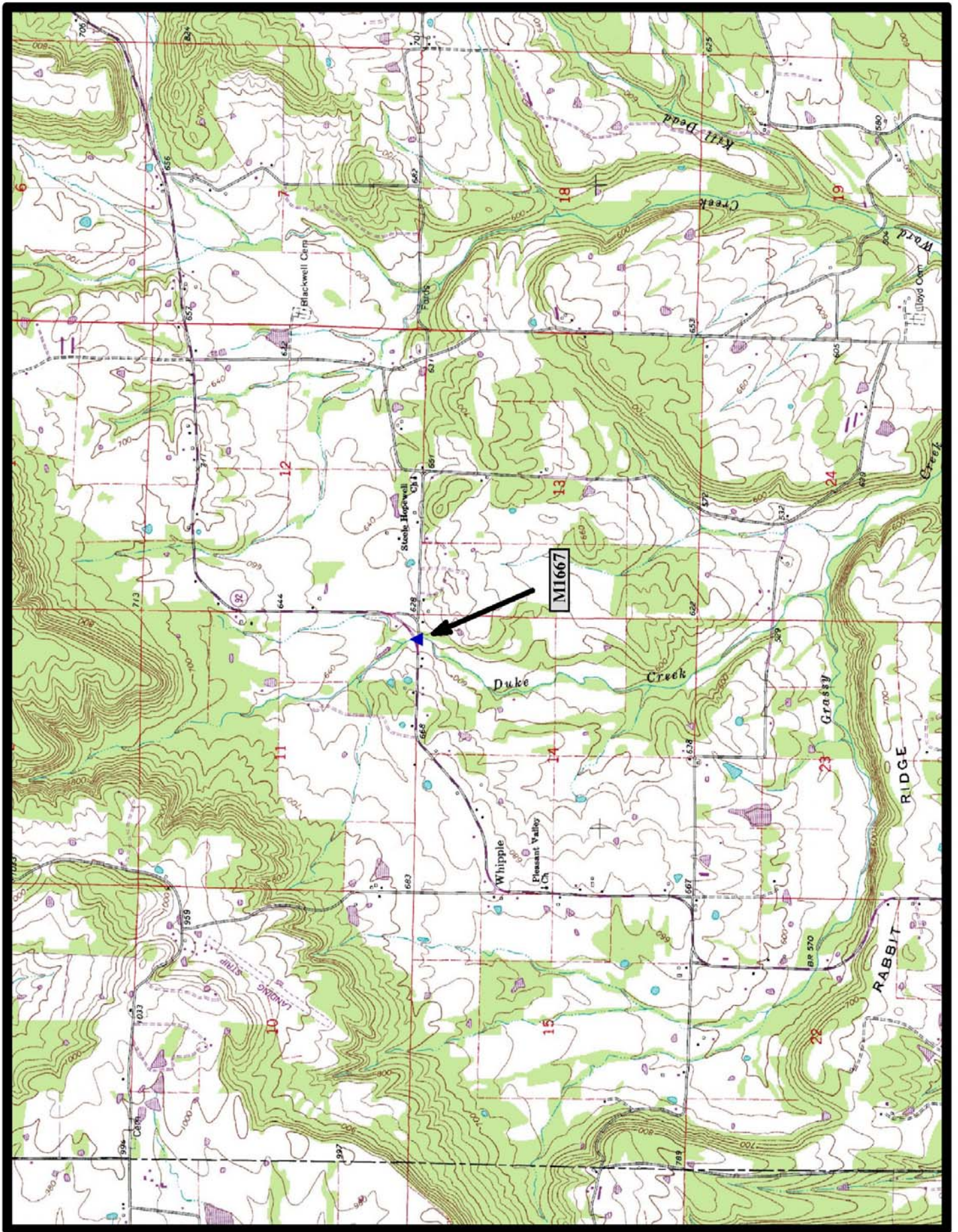


North

Danville 7.5 min. Quad



HISTORIC BRIDGE #M1667
COUNTY ROAD 819
VAN BUREN COUNTY
CONCRETE SLAB
CROSSES - DUKE CREEK
DATE OF CONSTRUCTION - 1939
BUILDER - WORKS PROGRESS ADMINISTRATION (WPA)
HISTORIC BRIDGE INVENTORY DATE - 2010
SHPO NUMBER -
HAER NUMBER -
DATE LISTED ON NATIONAL REGISTER -
LAT./LONG. 35:25:34.54, -92:26:45.63

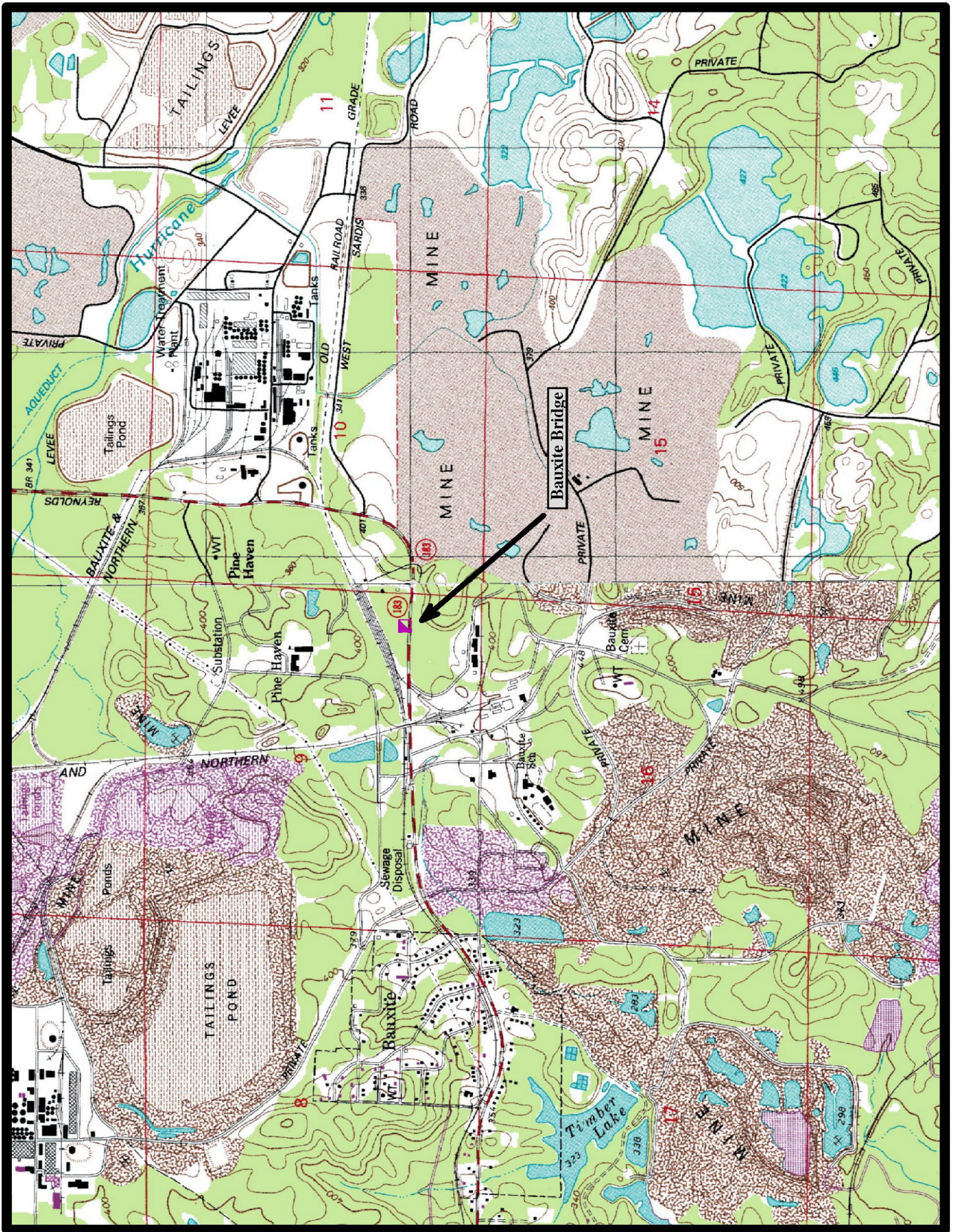


North

Bee Branch 7.5 min. Quad



PRESERVED HISTORIC BRIDGE - BAUXITE BRIDGE
NEXT TO STATE HIGHWAY 183
SALINE COUNTY
CONCRETE SLAB
CROSSES - UNNAMED CREEK
DATE OF CONSTRUCTION - 1919
BUILDER - UNKNOWN
HISTORIC BRIDGE INVENTORY DATE - 2005
SHPO NUMBER - SA0153
HAER NUMBER -
DATE LISTED ON NATIONAL REGISTER - 1/24/2007
LAT./LONG. 34:33:31.63, -92:30:08.56

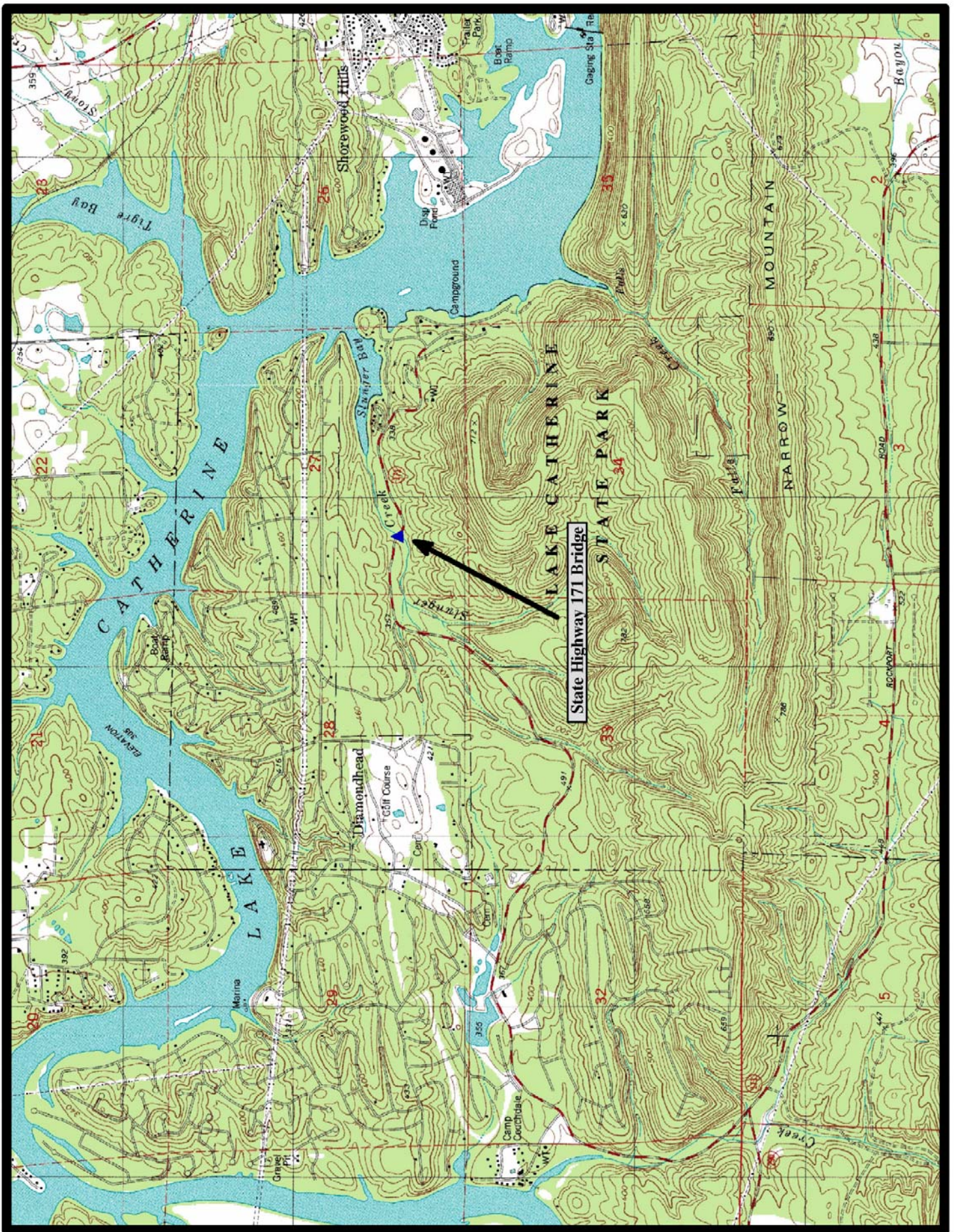


North

Benton 7.5 min. Quad



HISTORIC BRIDGE - STATE HIGHWAY 171 BRIDGE
STATE HIGHWAY 171
HOT SPRINGS COUNTY
CONCRETE SLAB
CROSSES - UNNAMED CREEK
DATE OF CONSTRUCTION - 1938
BUILDER - CIVILIAN CONSERVATION CORPS (CCC)
HISTORIC BRIDGE INVENTORY DATE - 1995
SHPO NUMBER - HS0073
HAER NUMBER -
DATE LISTED ON NATIONAL REGISTER - 5/28/1992
LAT./LONG. 34:26:12.27, -92:55:34.86



↑
North



HISTORIC BRIDGE - WATERSIDE STREET BRIDGE

WATERSIDE STREET

PULASKI COUNTY

CONCRETE SLAB

CROSSES - DRAINAGE DITCH

DATE OF CONSTRUCTION - 1939

BUILDER - METROPOLITAN TRUST COMPANY, NORTH LITTLE ROCK, AR

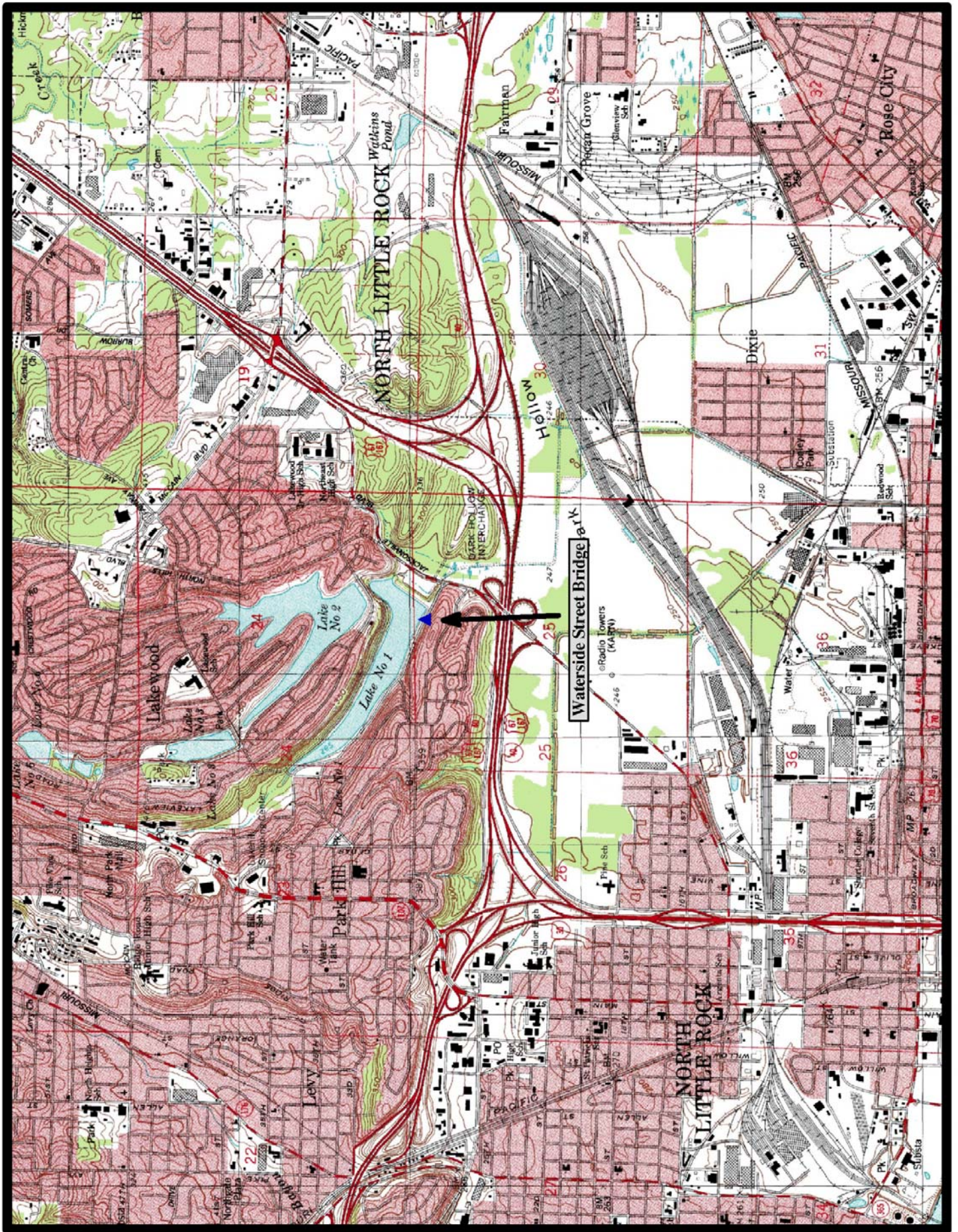
HISTORIC BRIDGE INVENTORY DATE - 1987

SHPO NUMBER - PU3309

HAER NUMBER - AR-72

DATE LISTED ON NATIONAL REGISTER - 6/14/1990

LAT./LONG. 34:46:54.58, -92:14:32.38



↑
North

McAlmont 7.5 min. Quad